

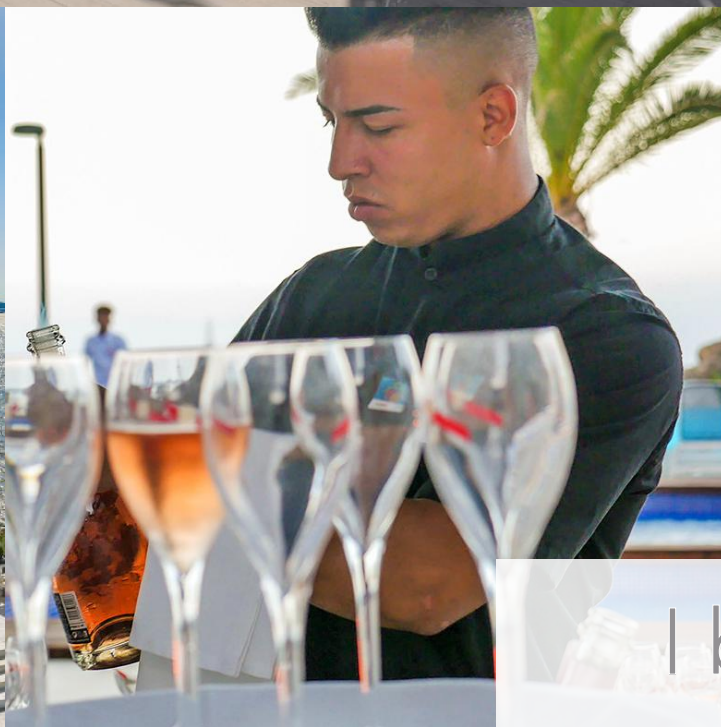


# PLAYASOL

APARTHOTEL PLAYASOL JABEQUE

With spectacular views, this hotel's setting is unique to the island: Dalt Vila to one side, a background of sea, and Playa d'en Bossa to the other side. There is no better setting for an outdoor celebration in idyllic surroundings. Its location means you can walk to the historic centre of the city, and guests arriving by plane are just 13 minutes away.

It has three different areas with a pool, Balinese beds and games.



01

## Pool

Features: Outdoors

Service: Cocktail party

Capacity: 200 max

02

## Restaurant

Features: Indoors

Service: Cocktail party or seated

Capacity: 200 max

Ibiza Town